



SOUTH BAY MUSICAL
THEATRE PRESENTS

Almost, Maine

A REAL ROMANTIC COMEDY



By John cariani

Directed by NICOLE TUNG

A special online Readers' Theatre production streamed via Zoom on Sept. 4, 2020
Almost, Maine is presented by special arrangement with Dramatists Play Service, Inc., New York.

Welcome to the eStudio!

Gratitude and legacy are themes that continually circle in my thoughts during our days (er ... months) of Shelter-In-Place. I continue to wish that you and your loved ones remain safe and healthy during this ongoing crisis. I am grateful to the theatre community for their generosity in becoming Sustaining Donors to keep our legacy alive. I cherish the guests who have helped the SBMT eStudio thrive. Tonight's presentation is further evidence of SBMT's flourishing legacy.

Almost, Maine takes place on a magical Friday night, over the span of about 10 minutes, in different locations in the "almost" town of Almost, Maine. In these 10 minutes, the lives of the characters are altered — loose ends wrapped up, relationships made, or not. Their paths adjust, and the characters grow — all in this moment. Likewise, the pandemic has altered theaters across the country. In our case, we continue to adapt and grow. We have expanded board opportunities, developed lasting relationships with patrons and artists, and brought entertainment to thousands, reaching many locals as well as people as far as Thailand and Japan. I am grateful for the opportunity the eStudio has given to enrich, enlighten, and entertain. I thank you for joining us in this grand experiment.

Before the pandemic caused us to alter course, Nicole and I were slated to fill directing roles for the 2020-2021 season, and when we set up the initial lineup of eStudio productions, she was the first person I went to. Nicole and I last worked together around 2007, and despite the years, our relationship continued as if no time had passed. I am grateful for her energy and enthusiasm in leading this phenomenal cast and production. She is an invaluable addition to SBMT's legacy.



My thanks to you, our supporters.

To this cast for embracing this grand experiment. To Vinh G. Nguyen for his guidance and encouragement. To Dallas Carter for the endless optimism. To our Board members, volunteers and Board Chair for the trust and faith that we will continue to create with a commitment to Heart, Community, and Quality. We *will* return to live performances. Meanwhile, I hope that tonight you can be swept away to a little town, under the stars, in winter.

With appreciation,
Sara K. Dean

P.S. If you are able, we ask that you consider becoming a Sustaining Donor by going to SouthBayMT.com/join-us/donate/



Director's Note

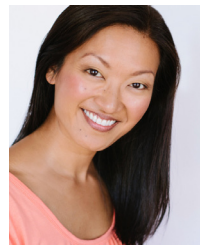
When Sara Dean presented this directing opportunity, I jumped at it. Not just because *Almost, Maine* is such a wonderful piece but because it was a creative challenge in a new frontier. It was also a rare opportunity to expand our talent search to anyone who had an internet connection and the desire to be a part of this project.

One wish for this piece was to give more BIPOC actors (Black, Indigenous, & Persons of Color) the chance to lend their talents to this reading. *Almost, Maine* was originally written for four actors to play multiple parts and has historically been performed by predominantly white casts. But since *Almost* is an imaginary town and the stories center around love, I believed there was no reason we couldn't broaden our casting choices both in number and in color. Every human being has experienced love in one form or another. And love is something we could *ALL* use right now.

I'm very proud to say that our efforts paid off. I am so grateful for this fabulous cast of fiercely talented individuals who have generously given their time and energy to this reading and have truly breathed life into the people of *Almost, Maine*. My other wish is that as you follow these characters on their various journeys, you will feel their joy, sympathize with their pain, embrace all the surprises. Because love is crazy and magical like that.

Thank you for joining us on this new adventure of online theatre. Please enjoy the show.

In love and gratitude,
Nicole Tung



**Celebrating Our 58th Season
in a very different way!**

South Bay Musical Theatre
P.O. Box 700215
San Jose, CA 95170-0215

(408) 266-4734
www.SouthBayMT.com

**SOUTH BAY MUSICAL THEATRE —
A 501 (C)(3) NON-PROFIT ORGANIZATION**



**Noteworthy
Entertainment**

Scenes and Cast of Characters

Time: the present. All events transpire over the same 10 minutes, on a cold, clear, moonless, slightly surreal Friday night, in the middle of the deepest part of a Northern Maine winter.

ACT ONE	ACT TWO
Narrator Jodi L. Disario	Narrator Jodi L. Disario
Prologue	Interlogue
Ginette Aleisha Lew	Pete Victor Velasquez
Pete Victor Velasquez	
Scene One: Her Heart	Scene Five: They Fell
Glory Elizabeth McClelland	Shelly Norma Lilia Ruiz Cruz
East Benjamin Hatch	Deena Jenni Chapman
Scene Two: Sad and Glad	Scene Six: Where it Went
Jimmy Steve Allhoff	Marci Eiko Yamamoto
Sandrine Miranda Hall Jiménez	Phil Doy Charnsupharindr
Waitress Aleisha Lew	
Scene Three: This Hurts	Scene Seven: Story of Hope
Marvalyn Mary Melnick	Hope Kristy Aquino
Steve Michael Paul Hirsch	A Man Miles Meckling
Scene Four: Getting it Back	Scene Eight: Seeing the Thing
Lendell Nelson Brown	Rhonda Michele Maher
Gayle Casey Semple	Dave Tyler Pardini
Intermission	Epilogue
	Pete Victor Velasquez
	Ginette Aleisha Lew
	Post-show



South Bay Musical Theatre's Mission

South Bay Musical Theatre strives to provide high-quality entertainment by bringing together a diverse group of participants in an inclusive, collaborative, and nurturing environment. As we share our passion for Theatre Arts, we endeavor to leave a lasting, positive impression upon our community.

Up next in the SBMT eStudio

A readers' theatre presentation of Tennessee Williams' "Best American Play" (NY Drama Critics, 1945)

Directed by
Walter M. Mayes
Sept. 19*



the
glass
menagerie

FREE ADMISSION thanks to donations
from our Monthly Sustaining Members!
SouthBayMT.com/join-us/estudio

"Online Encore" presentation

The Tony-winning Best Musical of 2014 is "to die for!"

OFFICIALLY LICENSED REPLAY.
TICKETS ARE JUST \$15.00
(AND THE WHOLE FAMILY CAN WATCH
TOGETHER AT YOUR CONVENIENCE!)

A
Gentleman's
Guide
to
Love & Murder

Sept. 26 to Oct. 4*

Stream on demand
SBMT's video recording
of last fall's hit show!

Details: SouthBayMT.com • 408-266-4734

* Dates subject to change

Production Staff

Box Office, House Manager, Volunteer Coordinator	Diane Hughes
Casting Director.....	Vinh G. Nguyen
Communications Assistant	Kama Belloni
Director	Nicole Tung
Facilities Director.....	Jeffrey Henson
Graphics, Marketing, Program, Video, Web Manager.....	Doug Hughes
Facebook Advertising.....	Lisa Litchfield
Producer, Executive Director.....	Sara K. Dean
Stage Manager.....	Dallas Carter
Assistant Stage Manager	Kim Beals
Technical Advisor.....	Dan Singletary
Workshops Coordinator	Janet Miller

Special Thanks

James Monroe Iglehart, Dramatists Play Service, Thursday Night Theatre Group

South Bay Musical Theatre 2020-2021 Board of Directors

Kevin Brownstein,
Member-at-large

Jennifer Maggio,
Chief Financial Officer

Dallas Carter,
Vice Chairperson

Raiña Parks,
Recording Secretary

Nique Eagen,
Corresponding Secretary

Sharon Peng,
Member-at-large

Michael Paul Hirsch,
Chairperson

Stephen Sammonds,
Member-at-large

Ed Hunter,
Member-at-large

Dan Singletary,
Member-at-large

Dave Leon,
Historian

Jay Steele,
Member-at-large



Executive Director: Sara K. Dean
Marketing Director: Doug Hughes
Facilities Director: Jeffrey Henson

Meet the Cast



Steve Allhoff (*Jimmy*) is pleased to be returning to SBMT's eStudio. He last appeared as Jack in *The Importance of Being Earnest*. Steve's other favorite Covid credits include Prince Humperdink (*Princess Bride*), Juror No. 8 (*12 Angry Men*), and Detective-Sergeant Trotter (*Mousetrap*). Steve would like to thank Sara Dean and the SBMT Board for keeping the SBMT community alive in the face of such adversity. Please consider making a monthly donation if you aren't already.

Kristy Aquino (*Hope*) was last seen as Jewel in *Tinker's Toy Factory* at California's Great America. Other recent credits include Natalie in *Next to Normal* (Plethos), *Flower Drum Song* (Palo Alto Players), *In The Heights* (Plethos), and Christmas Eve in *Avenue Q* (AMDA). With a BFA in Musical Theatre from The American Musical and Dramatic Academy, Kristy has spent the last two years in the Bay Area directing with The Audacity Performing Arts Project and teaching with TheatreWorks Silicon Valley. Excited to be working on her first project with SBMT, she hopes you enjoy the show and thanks you for your continued support of the arts during this trying time.



Nelson Brown (*Lendell*) is honored to be making his virtual theatre debut with South Bay Musical Theatre. A regular North Bay performer, some of his favorite roles include Cousin Kevin in *The Who's Tommy* (Novato Theater Company); Riff Raff in *The Rocky Horror Show*; Nathan Detroit in *Guys and Dolls*; The Adult Men in *Spring Awakening*; Callahan in *Legally Blonde*; Lewis in *Pippin* (Marin Musical Theatre Company); Vince Fontaine in *Grease* (Mountain Play); Miss Trunchbull in *Matilda the Musical* (Katia and Company); and Pains in *Henry IV Part 1* (Curtain Theatre). Thanks and love to Nikki—and thanks to SBMT for the welcome!

Jenni Chapman (*Deena*) is so excited to finally play a queer lady! Credits include Molly in *Peter and the Starcatcher* (SBMT), Chava in *Fiddler on the Roof* (Cabrillo Stage), and Little Red in *Into the Woods* (BBBay). Jenni holds a BFA in Musical Theatre with a focus in dialects from Emerson College, and is an award-winning photographer here in the Bay Area. She came out of the closet seven years ago, and since then has been actively working to educate others about LGBTQ+ issues. Jenni and her partner Ali are well known



in the LGBTQ+ social media community, advocating for LGBTQ+ rights and representation in all forms of media. Find her @ali_and_jenni on Instagram and jennichapmanphotography.com.



Doy Charnsupharindr (Phil) is grateful to be performing in this new normal. Thanks to SBMT for keeping theatre alive! His past credits include Harold Hill in *The Music Man* (PSP), Mike Masaok in *Allegiance* (CCCT), *Joseph & the Amazing Technicolor Dreamcoat*, *Miss Saigon*, *Les Misérables* (BBBay), and the world premier of Conrad Panganiban's *Welga!* (Bindlestiff). Offstage, he's a teacher and a coach specialized in leadership, communication, presentation, and storytelling. He utilizes his training as an actor to help others develop their communication skills and leadership presence. He dedicates this performance to his family in Thailand who—thanks to Zoom—will actually get to see this live!

Jodi L. Disario (Narrator) is a transplant from the Chicago suburbs—or she was when she moved to California 23 years ago. Favorite roles include Janet in *Birth* (City Lights), Sister Robert Anne in *Nunsense* (Pinole Community Players), Lenny Magrath in *Crimes of the Heart* (Hayward Little Theatre), and Annelle Dupuy-Desoto in *Steel Magnolias* (The Drama Group). She is the drama teacher/director at Willow Glen High School in San Jose, and she thinks it is incredibly cool to get paid for something that has been her passion since she was seven. Directing credits include *Disaster*, *Rent*, *Jesus Christ Superstar*, and *Little Shop of Horrors*, which never got to see an opening night, as it was canceled five days before opening this past March. She is married to her “right-hand man,” and has two daughters—an 8th grader navigating her way through distance learning Algebra and a college freshman studying theatre and performance at the University of Illinois at Chicago.

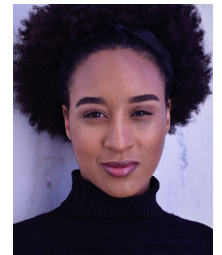


Benjamin Hatch (East) is thrilled to return to the SBMT (virtual) stage in this beautiful and unique production. He was most recently seen with SBMT earlier this year as Georg in *She Loves Me* and last year as Huck in *Big River*. Favorite previous roles include Cladwell in *Urinetown* (SCP), Mordcha in *Fiddler on the Roof* (SCP), and in the ensemble of *The Drowsy Chaperone* (SCP) and *The Hunchback of Notre Dame* (SBMT). Ben joins the SBMT eStudio from his temporary mountain home in Lehi, UT where he impatiently anticipates the end of the cursed coronavirus pandemic and eagerly awaits the arrival of his second son with his wife Brittany and firstborn, Luke.



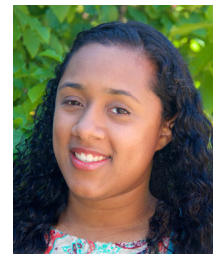
Michael Paul Hirsch (Steve) was last seen on the SBMT physical stage in 2019 as The D'Ysquith Family in *A Gentleman's Guide to Love and Murder*. He now chairs the SBMT Board producing and creating content for the company's eStudio to support and stay connected to the theatre community. Please consider becoming a Monthly Sustaining Donor to keep the theatre company thriving. Just go to SouthBayMT.com and click “Donate.” Thank you!

Miranda Hall Jiménez (Sandrine) is an Afro-Latina actress from Southern Maryland who is a Spring 2020 graduate from the University of Maryland in College Park. Her degree is a B.A. in Theatre with focuses in Performance, Directing, and Arts Education, as well as a Minor in Heritage Language & Latino/a Culture. Miranda has been performing since she was eight years old: first as a Suzuki-trained violinist and then as an actress. She hopes to use her passion and craft to continue storytelling on behalf of her ancestors and family members who cannot tell their stories themselves.



Aleisha Lew (Ginnette/Waitress/Suzette) is thrilled to be making her SBMT debut. Born in California, she is currently a student at UC Irvine with plans to get a BA in Drama with a minor in International Studies. Her recent credits include Christy in *10 Ways to Survive the Zombie Apocalypse*, Aleisha in *The Untitled Apocalypse Play About Hope*, and Jill in *English Made Simple*. In her free time, Aleisha enjoys photography, digital painting, and playing with her cats. She is so thankful for her friends, family, and mentors for supporting her on her journey and for being a part of her life.

Michele Maher (Rhonda) a San Jose native, is very excited to be portraying Rhonda in this production of *Almost, Maine*. Michele's most recent credits include *Little Shop of Horrors*, *Gypsy*, *Good People*, and *Act One*. Before that, she studied at Ohlone College where she was able to tour China as a dancer/stage tech, and also studied at Debbie Allen's Dance Academy in her youth. She would like to thank her very supportive husband, and her family and friends for always believing in her. This is Michele's first performance with South Bay Musical Theatre.



Follow us on social media!

facebook: bit.ly/southbaymt; twitter: @SouthBayMT; instagram: southbaymusicaltheatre



Elizabeth McClelland (*Glory*) is thrilled to be performing in *Almost, Maine*! She has been seen many times on SBMT's stage, but this is her first performance with the eStudio. Favorite past roles include Thea LaGuardia in *Fiorello!* (SBMT), Hope Harcourt in *Anything Goes* (SBMT), Minnie Fay in *Hello Dolly* (SBMT), Kat in *Mom's Gift* (TTC), Rosa in *Drood* (SCP), and Lucinda in *Into the Woods* (TIM). Elizabeth holds an M.A. in Theatre Arts from SJSU, and she works as an Instructor and Director, currently teaching classes online, for Peninsula Youth Theatre. She thanks her husband, Scott, and her sons, William and Matthew, for their love and encouragement!

Miles Meckling (*Daniel*) is making his SBMT debut! He is a graduating senior at Sacramento State University, obtaining a BA in Theatre. Credits include Berkeley Playhouse: *In the Heights* (postponed to 2021 due to COVID-19), Woodland Opera House: *Sister Act*, *Newsies*, William Jessup University: *Seven Brides for Seven Brothers*, Sutter Street Theatre: *Evil Dead*, Green Valley Theatre Company: *A Chorus Line*, CSU Sacramento: *In the Heights*, *A Midsummer Night's Dream*, *Annie*. He would like to thank his friends and family for all their love and support! Follow him on social media for more! Instagram @Leroi23



Mary Melnick (*Marvalyn*) gratefully returns to the SBMT family, most recently appearing in their eStudio production of *The Book of Will* (Rebecca Heminges). Over the past 25 years, Mary's performed in many SBMT shows, such as *Guys and Dolls* (Sarah Brown) opposite real-life best friend Karen DeHart (Adelaide), *Mack and Mabel* (Mabel), *My Fair Lady* (Eliza), *South Pacific* (Nellie), *A Day in Hollywood...* (Harpo Marx), and *Mame* (Mame— Theatre Bay Area Finalist – Outstanding Performance of a Principal

Role). Other credits include *Anything Goes* (Erma—Bay Area Theater Critics nominee for Best Supporting Actress) and *Ragtime* (Mother—Dean Goodman Choice Award) at Foothill Music Theatre, and the all-female version of *1776* at Tabard Theatre Company, where she had the once-in-a-lifetime opportunity to play John Adams. All my love to Robin and Andrew!

Tyler Pardini (*Dave*) is thrilled to be part of *Almost, Maine*! Previous credits include a very funny demon tree in the National Tour of *Evil Dead: The Musical*, and nine...no, ten priests in various locations throughout the country. They would like to thank their friends and family for their never-ending support.

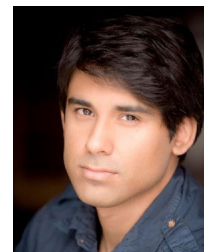


Norma Lilia Ruiz Cruz (*Shelly*) is an actor from Tijuana, B.C., Mexico. She recently graduated from the University of Oklahoma with a degree in Dramaturgy. Some of her theatre credits include Yemaya/Maya from a staged reading of *Yemaya's Belly* and Coatlicue/Catrina/Elena from *Day of the Death: A Real Life and Death Play*.



Casey Semple (*Gayle*) is a local Bay Area actress with a passion for theatre, film and the great outdoors. As a proud member of SAG/AFTRA, and represented by MDT Agency, she is grateful for every opportunity to work with fellow artists, especially during this unique time. Recently Casey had the pleasure of performing in this year's SF Sketchfest and took part in a staged reading for SF Indiefest. She is thrilled to be a part of SBMT's production of *Almost, Maine* and to be joining her fellow actors in this virtual experience. When she's not performing, Casey loves to hit the ground running with her neph-pups, indulge in family dinner nights and binge Netflix comedy specials.

Victor Velasquez (*Pete*) is excited to join this presentation of *Almost, Maine*. He has missed theatre and is glad to continue digitally. Victor was last seen, in person, in *Cabaret* at SCP. Hope to see everyone soon.



Eiko Yamamoto (*Marci*) is excited to appear in SBMT's production of *Almost, Maine*. Eiko's recent credit: Sugar (u/s) and Letter Writer #2 (u/s) in *Tiny Beautiful Things* at San Francisco Playhouse, Meiko in *Eureka Day* at Spreckels Theatre Company, and Ernestina Money in *Hello Dolly!* at Douglas Morrisson Theatre. Other select credits include *Flower Drum Song*, *The Phantom of the Opera*, and *Richard III*. She has worked with The Ground Floor at

Berkeley Rep (Young Writers of Color Collective), Dragon Productions, Palo Alto Players, Fuse Theatre with Bay Area Women's Theatre Festival, AlterLab of Alter Theater, The San Francisco Olympian Festival X, PianoFight, Actors Ensemble of Berkeley and SuperShakes with Silicon Valley Shakespeare. Upcoming: *Romeo and Juliet* at Marin Shakespeare Company (2021) and *Into the Woods* at Coastal Rep. She is an alumna of UCLA and CCA, San Francisco. eikoyamamoto.com, @eikoyh



Meet the Staff and Crew

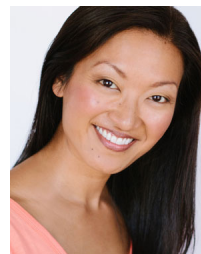
Dallas Carter (*Stage Manager*) is excited to be jumping into the Stage Manager's seat for the first time! Dallas been helping with the exciting eStudio productions, such as "Trivia Night with Walter Mayes," which has been thoughtfully enjoyable experience on the tech team, backstage. Dallas also continues to save various video-gaming worlds from peril and terrible foes, while enjoying the eStudio productions and meeting with as many friends and family for virtual happy hours and gathers as possible. Thanks for joining us this evening, wear your mask and stay safe and healthy!



Sara K. Dean (*Executive Director*) joined SBMT in 2017, and is grateful to be a part of its incredibly talented community. With the pandemic pause of 2020, SBMT has pivoted and developed virtual programs for audiences, performers and theater fans. The SBMT eStudio aims to enlighten, enrich and entertain. In return, we have deepened connections and strengthened our community. Sara earned her B.F.A. in theater from Tisch School of the Arts at New York University.

She was the Company Manager for American Musical Theater of San Jose, and worked in Arts Administration for SJ Rep and CMTSJ. My sincere appreciation for company of *Almost, Maine* for exploring theater in a different way. Thank you to our wonderful sustaining donors for their support as we pause our productions during the pandemic. Please consider giving to keep us thriving. SouthBayMT.com/join-us/donate.

Vinh G. Nguyen (*Casting Director*) is a Bay Area theatre maker, educator, and advocate. He has performed with companies such as 42nd Street Moon, San Jose Stage, Bay Area Musicals, and Cabrillo Stage. As a multi-faceted director, Vinh has collaborated on shows at South Bay Musical Theatre, Palo Alto Players, and several award-winning TYA productions at Bay Area Children's Theatre. He will be directing the musical *Allegiance* at Palo Alto Players this upcoming season. Vinh has taught workshops and/or guest lectured at San Diego State University, UC Berkeley, Academy of Art University, and San Jose City College. He is currently the EDI consultant and casting director at SBMT, and serves on the EDI Council for 42nd Street Moon. Vinh holds an MFA in Musical Theatre from SDSU and a BA from SJSU. He is an associate member of the Stage Directors & Choreographers Society (SDC) and Equity Membership Candidate Program (EMC). He is a passionate advocate for arts education and the promotion of equity, diversity, and inclusion. www.MrVinhNguyen.com he/him/his



Nicole Tung (*Director*) is honored to be directing *Almost, Maine* at a time where the world could use a little love. Past credits include assistant directing *Vanya and Sonya* and *Masha and Spike* and co-choreographing *Guys and Dolls* (SVCT). She is slated to assistant direct and choreograph *Allegiance* for PAP as well as perform in *School House Rock!* with 3Below Theaters in 2021. Offstage, she plays the role of wife opposite her husband, Jason, and mother/homeschool teacher/social activities director to their eight-year-old daughter, Kalana. Thank you for supporting theater online and here's to when we can all be together again.

Thanks to our Donors

It has been a challenging year for arts organizations. We humbly and gratefully acknowledge the many friends of South Bay Musical Theatre for responding so enthusiastically and overwhelmingly to our repeated fundraising appeals. Thank you SO MUCH for believing in our mission!

Monthly Sustaining Members

When COVID-19 caused SBMT to cancel its traditional mainstage season for 2020-2021, we shifted to online programming and asked our donors to become Monthly Sustaining Members. Our deepest thanks to all those who stepped up to help bridge the gap by joining the list—or increasing existing contributions.

Stephane Alwyn
Roger & Kathleen Arno
Ginnie & Jeff Backes
Dale Bates
Genie Bernardini
Christina Bolognini
Doug Brees
Kevin Brownstein
Connor Bui
Anita Carey
Laura Carlsen
Dallas Carter
Libby Cox
Ray D'Ambrosio
Sara & Phil Dean
Bruce Farly
Valerie Fenwick
Cathren Foscatto
Joseph & Maria Gallo
Barbara Goetz
John Heather
Barbara & Andy Heninger

Marie Hirsch
The Hirsch Family
Parker Hough
Stephen Hough
Dina & Neil Jacobson
Pap Charlie Marichuk
Bill and Margo Kannenberg
Steve & Carol Kay
Kimberly Kay
Joe Kelly
Katie Khera
Scott Knaster
Kurt & Laura Leafstrand
Bev & Phil Lenihan
Mae Heagerty-Matos
Walter M. Mayes
The McClelland Family
Mary & Robin Melnick
Diane Milo
Rick & Melissa Momboisse
The Motalygos
Kim L. Nameny

Raiña Parks
Jen Petersen
Edith & Douglas Kerr
Erin Reis
Barbara Reynolds
Mike Rhone
Leila Saeed
Mike Saenz
Steve & Terri Sammonds
Libby & Joel Schroeder
Lea & Karl Schweitzer
Dori Shimer & Phyllis
Chrisman
Dan Singletary
Rosemary Elliott-Snow &
David L. Snow
Kathy & Andy Switky
Eric Tooley
Christy Wait
Terri & Bill Weitz
Michael B. Wisper
Angela Yeung

ANONYMOUS GIFTS

In Honor of:

- All the people who dedicate their energy and talent to enable others to participate in high-quality community theatre!
- Steve Allhoff & Jen Maggio
- Our essential workers

In Memory Of:

- Ron Biehler
- Lupe Diaz & Dianne Lane
- Bonnie Estolas (mother/educator 39 years)
- Dianne Lane
- Edith Steele

More Donors

Angel (\$2,500+)

Barbara & Andy Heninger	Niblock Charitable Trust	Dan Singletary	Jay Steele Richard Wang
-------------------------	--------------------------	----------------	----------------------------

Benefactor (\$1,000 - 2,499)

Sara & Phil Dean Lynda Fox	Doug & Diane Hughes Helen Kane	Scott Knaster Marcia Lawson	James McGrath Steve Sammonds Jim Tellefson
-------------------------------	-----------------------------------	--------------------------------	--

Champion (\$500 - 999)

Jim & Judy Bangsund Dale Bates Lion Plumbing Supply Barbara Brothers Sue Cyr	Jim DeLoach Dick Enos The Hirsch Family James Jackson	Renee Jacobs Bill & Margo Kannenberg Sasha Motalygo Robert & Bonnie Peterson	David Simon Jack & Sally Stallard Ruth E. Stein Steve Stubbs Braden Taylor
--	--	---	--

Director (\$250 - 499)

Marjorie Alameda Marilyn Basham Kama Belloni Richard Blish Peter Buzanski Anita Hsiung Carey Karen Carter Anne Cummins Diana Doan Elaine Elkin Judee English Dick Enos Gladys Estolas Mark & Valerie Fenwick Lois Fiedler Diane Forsythe	Ronda Fraser Bernie Glienke Catherine Grellet Ruth Ann Groves Bernard Gutnick Beverly Hansberry John Heather Alan Herrmann Michael Hirsch Irene & Don Jenkins Marjorie Johnson Shirley Karabian Roger & Marge Lobbes Andra Marynowski Amy Milani Joan Miller	Dana Moran Barbara Morgan Mary Old Marge Papp Ralph Parkman Carol Parris John Patton Robert & Sandy Peeks Janice Penner Laura Peterson Lee Ann Payne & Chris Reber Rita Redfern Patti Reed Barbara Reynolds Barbara D Reynolds Ramon Reza	Bob And Joyce Rhodes Bob Rhodes Mike Rhone Cathy Rode Betty Jean Rogers Lea & Karl Schweitzer Masel Sheehan Roger & Nancy Smith David Snow Charles Steele Jay Sternin Tina Tan-Zane Catherine Thermond Jan Verhage Donald Village Anne Welker Michael B. Wisper
---	---	--	---

Enthusiast (\$100 - 249)

Karen Adkins Henry & Debbie Allhoff William Allman Kathy Amerson Roger & Kathleen Arno Janet Bailey Julia Ball James Bangsund David & Arlene Barraza Marcy Bates Eric Battilega Victor Beckman Kathleen Bejarano Yelena Belorousov Christina Bertani Carol Bevans Mark Beyer Arlene Boyd Yvonne Brill Rebecca Brownson Gary Campanella Rod & Colleen Carlson Norma Carney Anne Carpinetti Terri & Jim Casey Elizabeth Chandler Shirley Chappell Allan & Dawn Clark Marilyn Clawson Masel Clodius Walt Cole Carol Commendatore Thelma Copeland Robert Copeland Jackie Daemion & Karl Belser Adele J. Danielson Jean & Phil Darnall Marlene Davis Derek Demarco Clifton Demartini Bernard Director Gloria Dobbins Marie Donner Robert Donzelli Barbara Dyer Zina Lou Dyer John Edgerton Charles Eggen Josephine Erickson Lawrence L. Fargher Bruce Farly Mary Feldman Martha Fisk Gladys Fong	Diane Forsythe Cathren Foscatto Joan Fox Ed Fox Margaret Franklin Sandra Gabe Sonja Goedde Barbara Goetz Loretta Goglio Henry Goldenberg Glenn Gordon Ryan Goupil Angela Govig Jim Griffith Herbert Gross Matthew Hall Norma Hammons Beverly Hansberry Ross Harkness John Heather Christin Heintz Patti Henry Jeffrey Henson Robin Holbrook Jesslyn Holombo Allan Hurst Audrey & Mel Inouye Jonathan Jacobson Dina Jacobson Maria Jacobson Pamela & Edward Jajko Ray James Marc & Rebecca Jedel Terry Jenkins Jennie Johnson Wendy Jones Darrell Jones Thea Jorgensen James DeLoach, Jr. Carl Jukkola Sam Kahn Margaret Kannenberg Beth Karpas Steven Kay Kimberly Kay Joseph Kaye Margaret Keenan John & Jan Keifer Robert Kelly Joseph Kelly Jonathan Kerness Katie Khera Ed & Ellie Kiss Marvin Kohn Judi Kolbmann	Kayvon Kordestani Mary Kuperman Sylvia Kyle Tom & Teddy Lancaster Clare Landry Susan Latshaw Philip Lenihan Dave Leon Charles Loretta Helen Lott Audry Lynch Russell Mangan Louis & Jean Marcolina Lori Massad Mae Matos Carolyn Mauro Walter Mayes Terrence McCambridge Antoinette McMillin Rosalie Mechanic Carol & Mike Megas Mary & Robin Melnick Linda Menon Joan Meyer Deborah Miller Kenneth Mills Diane Milowicki Tanya Misfeldt Nora Monette Barbara V. Murphy Eldred Nelson Cyndee Newick Fred Niemann Eyal Oren Jennierae Paker Stephanie Palmieri Raiña Parks Alice Patrick John Patton Jennifer Peck Carol Peske Jennifer Petersen Robert & Bonnie Peterson Donna Pio Donald & Flavia Polensky Linda Poncetta John & Rosalie Price Richard & Dianne Priest Alan Purchase Tipu Purkayastha Owen Purser Roberta & John Ray J.a. Rick Rechenmacher April Durrett & Matt Reilly Regina Reynolds	Michael Rhone John Ribble Donna Roberson Betty Jean Rogers Janet Rohrer Joan Rubin Marian Rule Elva Russo Assaf Sagi in memory of Anthony Sapena Portia Saul Grace Schmidt Lorraine Scott Dori Shimer & Phyllis Chrisman Brian Smith Robert & Nancy Smith Cathy Grellet & Fred Smith Kathy Smith Bernice Smoll George Snell Catherine Snider Fern Souza Teresa Spencer James Stamos Chuck & Eddee Steele Edye & Larry Stein Dave Stein Julie Stokes Steve Stubbs Kathy Switky Peter & Kathleen Tobias Eric Tooley Rebecca Toton-Quinn Karen Trayer Jill Urbina Clare Vickers Christine Wait Laurie Waldman H & W Waterfield William Waterfield Jr Jo Anna Watt Terri Weitze Brad Wetmore Mary Lou & Benton White Benton White Leroy Wilkinson Jane Woodbeck Karen Woolard Lynn Woolhouse Kathleen Wright Nika Wynn Kenneth Yamamoto Carl Zon Irwin Zook
--	---	--	--

(continued on next page)

SOUTH
Bay
MUSICAL
THEATRE

We LOVE all our donors!

We are extremely grateful to the generous donors whose contributions help make our theatre successful. To support SBMT with a tax-deductible contribution, please visit tinyurl.com/SBMTdonate.

Friend (up to \$99)

When we were forced to cancel productions of South Pacific and The Fabulous 40s: Songs of Love & War, many of you donated your tickets back to SBMT. Those names are included here — along with our deepest thanks.

Stephen Adkins	Kevin Brownstein	Katie Coyle	Lois Fraine	Robert Hodges
Roya Afshar	Beverly Bryant	Kathleen Craig	Janice Frazier	Jim & Margaret
Diana Aldrich	Judith Bryer	Stephen Cramer	Susan French	Hohenshelt
Steve Allhoff	Susan Rabin Buchanan	Sybil Cramer	Jacqueline Friedland	Bobbie Holly
Stephen Alvin	Zhanna Buell	Janet Culala	Evelyn Gaertner	Stephen Hough
Stephane Alwyn	Joan Ann Bugado	Bonnie Cullen	Kay Gallagher	Michael Hough
Michael Anderson	Connor Bui	Raymond Dambrosio	Joseph Gallo	Anne Huberman
Diane Andrews	Janet Buonocore	Arthur Dandurand	Shirley Gano	Steven Hubert
Elizabeth Ardizzone	Peter Buzanski	Susan Dansker	Theresa Gaydon	Jackie Hughes
Sharon Arlt	Susan Camp	Stanley Davies	Kathie Gaylord	Douglas Huston
Anthony Armenta	Jasmin Canty	Sylvia Dayan	Connie Geaci	Tami Imai
Claire Arnold	Roberta Caplan	Tynka Dees	Sy Gelman	Katherine Ingold
Charlotte Aschoff	Laura Carlsen	Karen Dehart	Connie & Frank Geraci	Raefael Irvine
Elizabeth Aston	Colleen Carlson	Marie Kay Delaney	Elizabeth Geurts	Kimberly Jastremski
Anatoliy Babayev	Maryann Carnevale	Maggie Deloach	Maureen Gibbons	Andrea L Johnson
Jeffrey Backes	Doug Carothers	Jerome DeRuntz	Melissa Gilbert	Michael Johnson
Jillian Bader	Dallas Carter	Carole Detrick	Gregory Giska	Eric Johnson
Radha Bage	Barbara Casalegno	Art & Irma Diaz	Robert Gong-Guy	Hans Kiel Jr
Dwight Baird	Mr. & Mrs. James Casey	Vito Dimucci	Susan Goodrich	Marty Kahn
Bob Baker	Jacqueline Cathcart	Arturo R Dirzo	Robert Gordon	Sheila Kamp
Rita Baum	Carol Catron	Julie Dorst	Lois Gragnola	Stuart Kane
Barbara Beal	Vincy Chan	Janice Dorst	Karen Graul	Stan Karp
Thomas Becker	Cheri Chapman	Katherine Duffy	Gaylord Green	Richard Kaufman
Annie Bedichek	Dee Chase	Andy Eccles	Amy Griffith	Carol Kay
Homer Bell	Wendy Chen-Shen	Roxie Edwards	Susan Grimes	Pierce Keating
Trixie Bentley	Vincent Chiu	Charles Eggen	Bernice Gudgel	Julie Keeney
Genie Bernardini	Leah Chiu-Larosa	David Eisbach	Carol Gutow	Sita Kern
Christine Bernardini	Rosemary Chivers	Janet Elliott	Ellen Haas	Edith Kerr
Deborah Best	Dori Shimer & Phyllis	Gerald Engbretson	Joan Hahn	Hans Kiel
Lauren Bevilacqua	Chrisman	Paul Engel	Marilyn Haines	Pradyumna Kikkeri
Helena Birecki	John Christ	Lisa English	Jim Hall	Brian Kim
Joyce Birth	Brennon Church	Melanie Ercoli	Susan Haller	Gregory Kirk
Jane Bishop	Jonell Cipponeri	William Ereneta	Reg & Barbara Hamer	Colette M Kirk
Beverly K Bishop-York	Charles & Jonell Cipponeri	Andrew & Sandra Faber	Marge & Ed Hand	Nina Klepac
Colleen Block	Geoff Clark	Barbara Fairlie	Judi Hanley	Arleen Kluger
Heinz Bodeker	Rosalee Clarke	Mary Fales	Lynne Hanson	Elaine Knoernschild
Ann Bolhorst	Nancy Claunch	The Heintz Family	Trudi Harger	Barbara Kochman
Christina Bolognini	Marilyn Clawson	Justin Fan	Judy Harper	Dana Kolb
Jeri Boone	Kathy Cleary	Eric Farraro	Angela Harrington	Jean Krcik
Rita Boren	Joseph Cloward	Karen Fear	Timothy Harrington	Michael Kurty
Richard Bothman	The Jay Steele Fan Club	Robert Feigelson	Julieta Harris	Mary Kyles
Sandra Bouja	Lenore Cohen	Howard Feinberg	Alyson Harrold	Virginia Lai
Jane Bradley	Roy Cook	Lucy Feng	Susan Hauser	Russell Lash
Martha Bratton	Elyse Cook	Gavri Fernandez	Janet Haver	Wendie Lash
Douglas Brees	Elizabeth Cooper	Sara Fernandez	Christina Hawkins	Nancy Latter
Caia Brookes	Flora Coran	Karen Fihn	Eric Hayton	Richard Lavenstein
Ronald Brooks	Kevin Cornelius	Doreen Finkelstein	Susan Hayward	Laura Leafstrand
Cheyenne Brown	Amelia Coronel	Diane Fontaine	Francine Hileman	Darlene Lee-Young
Marlene Brown	Aaron Cowles	Anne Foran	Frederick Hines	John & Mary Lemons
Barbara B Brown	Shelby Cox	Joan Forte	Marie Hirsch	Beverly Lenihan
Martin Brown	Elizabeth Cox	Sylvia Fortun	Deanna Hisaw	Nancy Leonard

Friend (up to \$99)

Christine Levine	Katherine Moore	Sherri Plaza	Claudia Schinn	Cynthia Thompson
Ilene Levine	Herbert Moran	Donald & Flavia	Virginia Schmidek	Laura Ann Tindall
Meg Liggett	Dana Morgan	Polensky	Elizabeth Schroeder	Susan Tonkin
Ellen Lim	Destany Morgan	Lydia Polidi	Joel Schroeder	Nancy Tronson
Phyllis Lindquist	Katy Moylan	Jenn Poret	Dana Schroeder	Cheryl Trotter
David Litt	Juan Moyoli	Mindy Prestia	Rochelle Schwartz	Ian Tullis
Charles Louis III	Carol Muller	Robert Pruitt	Ann Seid	John Turner
Allan Low	Jennifer Murov	Bonnie Radding	Marilyn Sell	Diana Turner
Jean Ann Luckhardt	Barbara Murphy	Esther Ramonda	Barbara Sellin	Carol Vanwyk
Richard Lukens	Rose Myers	Karen Rasdal	Ed Sengstack	Betty Verhoeven
Amy Ly	Patricia Nakashima	Nancy Rasmussen	Christine & Roy Shackel	David Vickrey
Thomas Maiden	Kim Nameny	Sally Ravel	Pat Shank	Catherine Villa
Rena Mandey	Rosemary Neff	Marie Suzanne Regul	Lois Sharp	Kent Vincent
Mary Lou Manlove	Sue Ellen Nelsen	Erin Reis	Maiko Shaw	Maxine Voight
Athene Mantle	Karen Nelson	Jo Ann Renk	Bg Shipper	Gwendolyne Wagner
James Marshall	Loan Nguyen	Helen Revlock	Olga Shtigluz	Marian Waldman
Sharon Martin	Kay Nichols	Jean Ridley	Paul Shumaker	Pamela Wales
Maggie Martin	Norm Ohtaka	Catherine Rieflin	Lawrence Siders	Clara Walker
Lauro Martinez	Diane Okusako	Manuela Rinaldi	Robyn Siebenthal	Richard Walker
Louis Martini	Molly Olivas	Judith Simon	Mary Rodarte	Richard Wang
Mark Mason	Bert Olson	William Rodriguez	Michael Singh	Louise Webb
Elizabeth Matchett	Shirley Olszewski	Anita Romero	Angelina Sklyar	Richard Wells
Loretta Matheson	Cassie Ott	Renee Romo	Helene Snyder	J. Benton White
Wendy Matthews	Glenn & Elizabeth	Peter Rose	Annette Snyder	Stephen White
Pamela Maxwell	Overstreet	Sarah Rosenberg	Michael Spencer	Laura Whitman
C. Gail Mayer	Mitzi Palmer	Robin Rosenberg	April Spurgiesz	Robert Whitten
Janice McCabe	Gwyneth Panos	Vicki & Bruce Rosenthal	Mary Stamps	Kathryn Wiese
Elizabeth McClelland	Amy Papazian	Byron Rovegno	Diana Steele	Vicki Witkovski
Linda Medeiros	Mary Ann Parks	Joanne Rudinskas	Al Stewart	Harvey Wolfe
Maureen Medeiros	Cheryl Ann Passanisi	Joan Russell	Mike & Lu Story	Shirley Woods
Shirit Megiddo	Beverly Pastorino	Leila Saeed	Mike Story	Renee Woolard
Boba Mehic	Marilyn Paulsen	Michael Saenz	Robert Stoudt	Aimee & James Wu
Diane Melone	Kay Paumier	Randy Sahae	Barbara Sturges	Roberta Yamagami
Aisha Memon	James Pearson	Dianne Saichek	Elizabeth Stutz	Barbara Yates Weissman
Sylvia Metz	Jenee & James Pearson	Julia Sakamoto	Mary Sunseri	Simone Yecny
Karin Meyer	Hughes	Craig Salmond	Bob Sunshine	George Yefchak
Joyce Miller	Sheryl Peck	Miriam Salo	Stephen Tabler	Angela Yeung
Janet Miller	Laura Pedersen	Stephen Sammonds	Noelle Tardieu	Jennie Yeung
Joe & Betty Miller	Stephan Pellissier	Madeleine Samson	Linda Taylor	Carol Yiu
Ruth Miller	Avraham Perahia	Pamela Sander	Nancy & Robert	Virginia Ynegas
Anne Minaee	Will Perez	Karen Sanguinetti	Tepperman	Shu Ju Yu
Greg Mischou	Julie Peterson	Susan Sanicky	Judi Thayne	Elizabeth Zambetti
Karen Miyamoto	Nancy Peyton	Janet Sauer	Julia Thomas	Raelene Zenti
Nicholas Moline	Russ & Carol Philpott	Helen Scheel	Jan Thomas	Jingjie Zhan
Melissa Momboisse	Melanie Phung	Deanna Scheler	Mark Thompson	



Follow us on social media!

facebook: bit.ly/southbaymt

twitter: @SouthBayMT

instagram: southbaymusicaltheatre



September in the SBMT eStudio

Here's a preview of other events now in the works. Dates subject to change. Check SouthBayMT.com/join-us/estudio for the latest info and reservations.

Fri., Sept. 4.....Readers' Theatre: *Almost, Maine*, directed by Nicole Tung
 Sat., Sept. 12.....Skills Workshop: Beginning/Intermediate Tap Dance with Francesca Cipponeri
 Mon. Sept. 14.....Broadway By The Decade: History of Musicals in the 60s with Heather Kenyon
 Sat., Sept. 19.....Skills Workshop: Beginning/Intermediate Jazz Dance with Michael Saenz
 Sat., Sept. 19.....Readers' Theatre: *The Glass Menagerie*, directed by Walter M. Mayes
 Sun., Sept. 20.....Forum: The State of SBMT, with the Board of Directors
 Tues., Sept. 22.....South Bay Cabaret: The cast of *A Gentleman's Guide to Love & Murder*
 Sat., Sept. 26.....Online Encore: *A Gentleman's Guide to Love & Murder* on-demand video
 replay available through October 4 at ShowTix4U.com for \$15
 Tues., Sept. 29.....A Muse Event: Name That Show Tune with Anthony Howard-Erevia
 Wed., Sept. 30.....A Muse Event: Musical Theatre Trivia with Walter M. Mayes

**For more programming like tonight's play,
please follow us on social media.**

Facebook Group: facebook.com/groups/SBMTeStudio
 YouTube Channel: youtube.com/c/SouthBayMusicalTheatre



Also visit our eStudio website at
SouthBayMT.com/join-us/estudio



It takes many hands to make theatre magic happen!

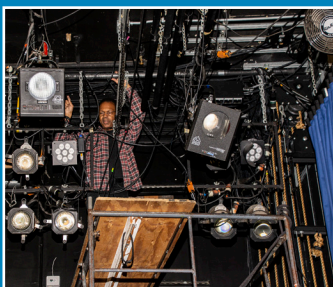
South Bay Musical Theatre is a non-profit organization that is largely driven by its volunteers. Even now during this “pandemic pause,” we’re always looking for folks who like to share their talents in a variety of ways:

- | | | | |
|---------------|----------------|---------------|----------------------|
| ❖ Ushering | ❖ Costumes | ❖ Spotlights | ❖ Event planning |
| ❖ Concessions | ❖ Set building | ❖ Stage crew | ❖ Fundraising |
| ❖ Hospitality | ❖ Painting | ❖ Videography | ❖ Grant writing |
| ❖ Box office | ❖ Props | ❖ Photography | ❖ Board of Directors |

Whether you’re already skilled or just keen to learn, we have opportunities for you to join the fun of live musical theatre. If you’re curious, please email us at chairperson@southbaymt.com, call us at 408-266-4734, or go online at southbaymt.com/join-us/volunteer to let us know about your passions.



Set builders are always welcomed. Not handy with tools? We'll train you!



Learn how to run spotlights or the sound board—or join the fun backstage on deck crew.



Sell snacks or volunteer as an usher, and see the show for free!