



Noteworthy Entertainment

SOUTH BAY MUSICAL THEATRE PRESENTS

"A Swinging 60s Sensation"

# SHOUT!

THE MOD MUSICAL



Photo by Steve Stubbs

**Sept. 25 to Oct. 16, 2021**

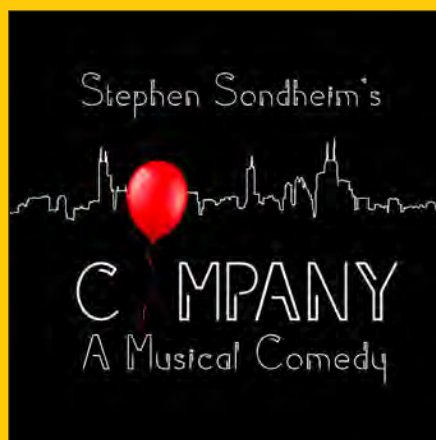
Saratoga Civic Theater • 13777 Fruitvale Ave. • Saratoga, California

**SouthBayMT.com • 408-266-4734**

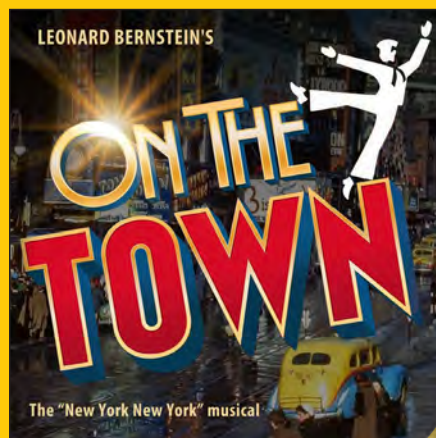
## Special discount for today's patrons!

**Purchase a two-show or three-show package for our remaining productions and **SAVE UP TO \$30!****

Show your *SHOUT!* ticket at our box office today (or call us at 408-266-4734 by Oct. 31) and receive a special price for a "mix and match" package of two or more shows. Prices vary by performance day and time as well as seating area. Enjoy discounted pricing and subscriber benefits, like guaranteed availability and preferred seating.



January 29 - February 19, 2022



May 14 - June 4, 2022



**Plus! One-night only special concert event:**



February 13, 2022



Noteworthy Entertainment

**Visit [SouthBayMT.com](http://SouthBayMT.com) or call 408-266-4734 to buy your package today!**

**"...Maybe I'll see you there. We can forget all our troubles, forget all our cares."**

— *Downtown*, by Petula Clark

**A**t first glance, *SHOUT! The Mod Musical* was exactly what our community needs right now: a joyous celebration as we return to in-person performances. On second glance, the songs and the characters' journey are still relevant today. Ms. Clark was writing about a bustling city in her classic song, but she could have been writing about the theatre as a place to unwind, be together, and build community. The songs you will hear tonight still inspire as they did in the 1960s, when they brought compassion and ignited change. Music helps us connect, smile, share joy, and shift mindsets.

**T**onight we go "over the pond" to London in the 1960s. As in the US, the 1960s brought anti-war protests, flower power, and the dawn of the feminist movement to England. The fight for civil rights was also strong there, though that movement was perhaps even more important in the US. It is hard to

**"Put on your best and wear a smile!  
I know a place  
where the music is  
fine and the lights  
are always low!"**

— *I Know a Place*,  
by Petula Clark

believe it all happened 60 years ago, and yet we seem to struggle with the same issues today. The soundtrack that accompanied those movements still resounds, with songs like "Blowin' in the Wind," "Respect," and "A Change is Gonna Come." These songs remind us that music can heal, inspire change, and provide an emotional connection—even across the decades.

**W**e are overjoyed to welcome you back to the Saratoga Civic Theater for a fabulous season! We hope you enjoy our production of *SHOUT! The Mod Musical*. Coming up next is the provocative *Company* (Winter 2022), Sondheim's examination of relationships, commitment, and isolation. We finish the season with the delightful *On The Town* (Spring 2022), following three young men on a 24-hour shore leave in New York City. I hope you will join me.

With appreciation,  
and a joyful heart,  
Sara K. Dean, and the  
company of *SHOUT!*



**Celebrating Our 59th Season!**

South Bay Musical Theatre  
P.O. Box 700215  
San Jose, CA 95170-0215

(408) 266-4734  
[www.SouthBayMT.com](http://www.SouthBayMT.com)

SOUTH BAY MUSICAL THEATRE —  
A 501 (C)(3) NON-PROFIT ORGANIZATION



Noteworthy Entertainment



# Shout! The Mod Musical

created by

Phillip George David Lowenstein Peter Charles Morris

Originally produced Off-Broadway in New York City by Victoria Lang & P.P. Piccoli and Mark Schwartz

Developed in association with Amas Musical Theatre, Donna Trinkoff, Producing Director

## SHOUT! THE MOD MUSICAL

is presented through special arrangement with Music Theatre International (MTI).

All authorized performance materials are also supplied by MTI.

www.mtishows.com

Any video and/or audio recording of this production is strictly prohibited.

## MUSICAL CREDITS

Song Title	Writers	Publisher
All I See Is You	Benjamin Weisman/Gerald Clive Westlake	Warner Chapell Music
Coldfinger	John Barry/Parody lyrics Phillip George	N/A
Colour My World	Anthony Peter Hatch/Jackie Trent	Welbeck Music LTD
Don't Give Up	Anthony Peter Hatch/Jackie Trent	Welbeck Music LTD
Don't Sleep in the Subway	Anthony Peter Hatch/Jackie Trent	Welbeck Music LTD
Downtown	Anthony Peter Hatch	Welbeck Music LTD
England Swings	Roger Miller	Sony/ATV
Georgy Girl	Jim Dale/Dion O'Brien	Warner Chapell Music
How Can You Tell	Chris Andrew	Warner Chapell Music
I Couldn't Live Without Your Love	Anthony Peter Hatch/Jackie Trent	Welbeck Music LTD
I Just Don't Know What to Do with Myself	Burt Bacharach/Hal David	Warner Chapell Music
I Know a Place	Anthony Peter Hatch	Welbeck Music LTD
I Only Wanna Be With You	Mike Hawker/Ivor Raymonde	Warner Chapell Music
One, Two, Three	Leonard Borisoff/Lamont Dozier	Welbeck Music LTD
Pictures From the Past	David Caldwell/Peter Charles Morris	Self Published
Round Every Corner	Anthony Peter Hatch	Welbeck Music LTD
Sign of the Times	Anthony Peter Hatch	Welbeck Music LTD
Shout!	Kelly O. Isley/Ronald Isley Jr./Rudolph Isley	EMI Music Publishing
Son of a Preacher Man	John David Hurley/Ronnie Stephen Wilkins	Sony ATV
Talk About Love	Christopher Fredrick Andrews	WB Music Corp
Tell the Boys	Peter Callander/Mitch Murray	Painted Desert Music Corporation
These Boots Are Made for Walking	Lee Hazelwood	Criterion Music Publishing
Those Were the Days	Eugene Raskin	Essex Music, Inc
To Sir With Love	Donald Black/Mark London	EMI Music Publishing
Who Am I?	Anthony Peter Hatch	Welbeck Music LTD
Windy	Ruthann Frideman	Welbeck Music LTD
Wishin' and Hopin'	Burt Bacharach/Hal David	Warner Chapell Music
Wives and Lovers	Burt Bacharach	Warner Chapell Music
You Don't Have to Say You Love Me	Giuseppe Donaggoio/ Simon Napier-Bell/ Vito Pallavicini	EMI Music Publishing
You're My World	UmBurto Bindi/Gino Paoli	Welbeck Music LTD

# Scenes & musical numbers

Scene: England in the 1960s

## Opening Medley:

England Swings; Round Every Corner; I Know a Place

Talk About Love

I Only Wanna Be With You; Tell the Boys

How Can You Tell; Wishin' and Hopin'

One, Two, Three; To Sir with Love

Wives and Lovers (My Handsome Prince)

Don't Sleep in the Subway

Son of a Preacher Man

Coldfinger

You Don't Have to Say You Love Me

## Winds of Change Medley:

Georgy Girl; Windy; How Can I Be Sure?

I Just Don't Know What to Do with Myself

## Fashion Show:

Sign of the Times

These Boots Are Made for Walkin'

I Couldn't Live Without Your Love

You're My World; All I See Is You

Those Were the Days

Shout!

## Epilogue:

Pictures From the Past; Downtown

## Mega Mix:

Shout!; Those Were the Days



*There will be NO INTERMISSION during this show. Due to a recent upswing in COVID cases, our concession stand is closed, and no eating is allowed in the theater. Please wear your mask over your mouth and nose while you are inside the building.*

# Production Staff and Crew

Box Office Managers .....	Diane Hughes, Dan Singletary
Box Office Assistant.....	Denise Reynolds
Cast Deputy.....	Melissa Momboisse
Casting Consultant .....	Vinh G. Nguyen
Communications Assistant .....	Kama Belloni
Costume, Hair & Makeup Designer .....	Y. Sharon Peng
Wardrobe and Hair Supervisor .....	Jehan Shemesh-Rasmussen
Director and Choreographer.....	Lee Ann Payne
Assistant Director.....	Jessica Whittemore
Facilities Director.....	Jeffrey Henson
Graphic Design.....	Doug Hughes
Shout! Magazine cover designs.....	Jay Steele
House Manager, Volunteer Coordinator.....	Diane Hughes
Lighting Designer.....	Aya Matsutomo
Follow Spot Operators.....	Don Masuda, Nita Rabe-Uyeno
Marketing & Social Media Director .....	Doug Hughes
Facebook Advertising .....	Lisa Litchfield
Public Relations .....	Jonathan White
Musical and Vocal Director .....	Debra Lambert
Photographer.....	Steve Stubbs
Producer, Executive Director.....	Sara K. Dean
Production Manager .....	Patti Reed
Program Content and Design .....	Doug Hughes
Program Input and Copy Editing .....	Kim Beals, Sara K. Dean, David Mister
Properties Designer .....	Patricia Bilello
Set Designer & Scenic Painter.....	Brett Carlson
Set Construction Head.....	Richard Cartwright
Set Construction .....	Karl Schweitzer, Jay Steele
Set Painting .....	Robert Carey
Sound Designer.....	Chris Beer
Assistant Sound Designer .....	Andy Switky
Sound Engineers .....	Dan Singletary, Braden Taylor
Stage Manager.....	Carla McCreight
Assistant Stage Managers.....	Christopher Morton, Lucas Simone
Production Assistant .....	Penelope Bautista
Truck Drivers.....	Michael Cuddy, Kevin Davies, Phil Dean
Videographer .....	Keith Pennings
Web Designer.....	Doug Hughes

# Special Thanks

Lindsey Duran, Ed Hand (WVLO Musical Theatre Company), Ed Hunter, William Liberatore, Mike Munoz, Reggie Reynolds, Saratoga Chamber of Commerce, Saratoga City Council, and Barbara Weissman.

## The Shout Band

Keyboards: Debra Lambert, Bob Sunshine  
Percussion: Dori Shimer

Apologies and sincere thanks to any staff, crew, or other contributors whom we were unable to include due to the early publication deadline for this program!



## South Bay Musical Theatre 2021-2022 Board of Directors

Doy Charnsupharindr,  
*Member-at-large*

Y. Sharon Peng,  
*Member-at-large*

Barbara Heninger,  
*Member-at-large*

Tipu Purkayastha,  
*Member-at-large*

Michael Paul Hirsch,  
*Chairperson*

Stephen Sammonds,  
*Vice-chairperson*

Edward Hunter,  
*Member-at-large*

Dan Singletary,  
*Chief Technology Officer*

Jennifer C. Maggio,  
*Chief Financial Officer*

Jay Steele,  
*Member-at-large*

Raiña Parks,  
*Recording Secretary*

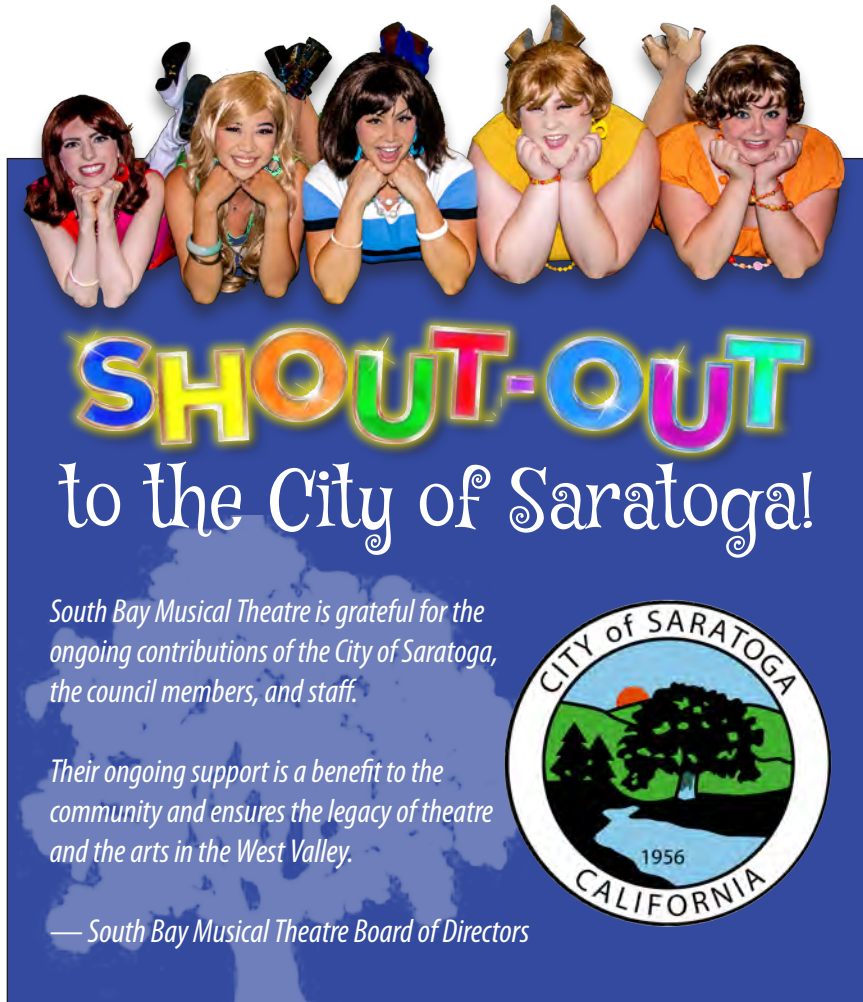
Aly Suleman,  
*Member-at-large*

*Executive Director:* Sara K. Dean  
*Marketing Director:* Doug Hughes  
*Facilities Director:* Jeffrey Henson



# Cast of Characters

Red Girl .....	Melissa Momboisse
Orange Girl.....	Christina Bolognini
Yellow Girl.....	Jamie Gussman
Green Girl.....	Amanda Le Nguyen
Blue Girl .....	Heather Mae Steffen
Red Girl understudy .....	Natalie To
Gwendolyn Holmes and Orange Girl understudy.....	Kimberly Kay
Yellow and Green Girl understudy .....	Mylissa Malley
Blue Girl understudy .....	Jessica Whittemore



**SHOUT-OUT**  
to the City of Saratoga!

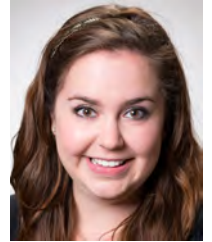
South Bay Musical Theatre is grateful for the ongoing contributions of the City of Saratoga, the council members, and staff.

Their ongoing support is a benefit to the community and ensures the legacy of theatre and the arts in the West Valley.

— South Bay Musical Theatre Board of Directors

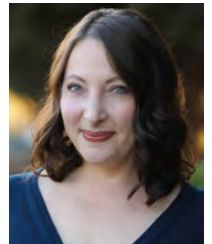
# Meet the Cast

**Christina Bolognini** (*Orange Girl*) couldn't be happier to bookend 18 months of a COVID-induced musical theatre hiatus with two delightful SBMT shows: *She Loves Me* and *Shout!* Favorite past roles include Cinderella in *Into the Woods*, Belle in *Beauty and the Beast*, Olive in *...Spelling Bee*, and Pickles in *The Great American Trailer Park Musical*. She has previously sung with the California Pops orchestra and San José's acclaimed group The Choral Project. Christina holds a B.A. in Theatre Arts and M.A. in Education from Loyola Marymount University. During the day, she is a fourth-grade teacher in San José.



**Jamie Gussman** (*Yellow Girl*) is finishing their final year at Santa Clara University, where they study Theatre Arts and Anthropology. Some previous credits include Tracy Turnblad in *Hairspray* (Stage1), Jan in *Grease* (SCP), Martha Dunnstock in *Heathers The Musical* (PSP), Linnea in *The Book of Holding On* (SCU Presents), The Nurse/Darla in *The Tin Woman* (TTC), and Ed Knight in *The Book of Will* (SBMT eStudio). They thank all their loved ones for their support throughout the process.

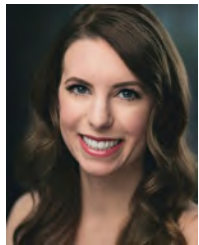
**Kimberly Kay** (*Gwendolyn Holmes; Orange Girl understudy*) Past credits include: *My Fair Lady* (Mrs. Hopkins) and *Promises, Promises* (Ms. Olson) at SBMT; *Spamalot* (Patsy) and *Into the Woods* (Cinderella's Stepmother) at TIM; *Wizard of Oz* (Wicked Witch) at LASC; *Bullets Over Broadway* (Atta Girl & Eden understudy), *Cinderella*, *9 to 5*, and *She Loves Me* at FMT; and *Bells Are Ringing* (Gwynne) at WVLO. Much love to my family & friends for their support!



**Amanda Le Nguyen** (*Green Girl*) is thrilled to be in another amazing SBMT production! She is an active Bay Area teaching artist and performer. Her recent credits include playing Bus Driver in the regional tour of *Don't Let Pigeon Drive the Bus!* (BACT), *Thoroughly Modern Millie* (SBMT), *Cinderella* (FMT), entertainment at California's Great America, *Rock of Ages* (PAP), *In The Heights* (CLTC), *Grease* (SCP), *A Chorus Line* (WVLO), *Rent* (PCP), *West Side Story* (CLTC), *American Idiot* (CLTC), and the world premiere of *Beautiful Oops!* (BACT) just to name a few. Love to her incredible family and friends. Hey, Bub.

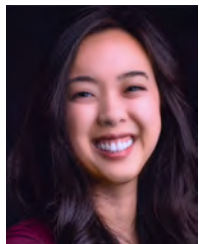
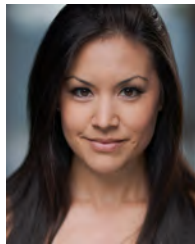


**Myliissa Malley** (*Green & Yellow Girl understudy*) was last on this stage as Ms. Flannery in *Thoroughly Modern Millie*. A Bay Area native who grew up in local children's theater, Malley is a proud member of TBA, and can be found performing and teaching all over the region. Favorite credits: Ruth Hoch (*Book of Days*), Douglas Morrison Theatre; Kate Monster (*Avenue Q*), LASC; and Evelyn in the short film *Offices and Accountants*. She holds degrees in Dance and Drama from UC Irvine and is a co-founder of The Clue Collective, a murder mystery dinner theatre company. More at [mylissamalley.com](http://mylissamalley.com).



**Melissa Momboisse** (*Red Girl*) is thrilled to make *Shout!* her first production with SBMT! She most recently appeared as Lucy in *You're a Good Man, Charlie Brown* at FMT. Other favorites include: *Funny Girl* (Fanny Brice) at Throckmorton Theatre; *Newsies* (Katherine) and *Anything Goes* (Hope) at HT; *Hairspray* (Penny) at BAM; *Heathers* (Heather McNamara) at PSP; *Showboat* (Kim) at SFO; *West Side Story* (Anybodys) and *Grease* (Frenchy) at CCMT; *Little Shop of Horrors* (Audrey) at PCRT; *Ragtime* (Evelyn Nesbit) at CMTSJ Marquee; *Cabaret* (Sally Bowles) at CT; *Grey Gardens* (Young Little Edie) at DMT; *25th... Spelling Bee* (Olive) at TVRT. [www.MelissaMomboisse.com](http://www.MelissaMomboisse.com), @MelisMombo

**Heather Mae Steffen** (*Blue Girl*) is thrilled to be back on stage! This is her first show with SBMT. Some of her favorite past roles have been Cheryl in *Evil Dead the Musical HD Tour*, DeLee in *Smokey Joe's Cafe*, Vanessa in *In the Heights*, and Rocky in *The Rocky Horror Show*. When she's not performing, she enjoys riding horses and bodybuilding. She also wants to thank her dad for his endless love and support.



**Natalie To** (*Red Girl understudy*) is thrilled to be making her main stage debut with South Bay Musical Theatre! Audiences may remember her from the eStudio Cabaret: *Classics vs. Contemporary*, where she sang and played piano. She dedicates this show to her family and friends for their support as she follows her passions. Huge thanks to the *Shout!* team for being so welcoming!





**Follow us on social media!**

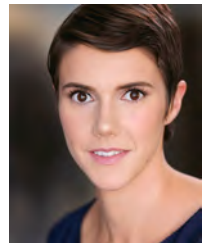
facebook: [bit.ly/southbaymt](http://bit.ly/southbaymt)

twitter: @SouthBayMT

instagram: [southbaymusicaltheatre](http://southbaymusicaltheatre)



**Jessica Whittemore** (*Assistant Director, Blue Girl understudy*) was last on stage in her SBMT debut as Ilona Ritter in *She Loves Me!* She is grateful for this opportunity to assistant direct and learn more about one of her favorite art forms from one of her favorite directors. Previous roles include Margaret (*Silent Sky*—CLTC), Joy (*The Tin Woman*—TTC), Velma (*Chicago*—CS), Ulla (*The Producers*—CS), Amalia (*She Loves Me*—FMT), and Ilse (*Spring Awakening*—SCP).



Offstage, Jessica designs courses at the Stanford School of Medicine. She is an environmental science graduate of USC and the University of Michigan.

## Meet the Staff



**Chris Beer** (*Sound Designer*) is happy to return to the theater. Previously, he has worked in a variety of roles for SBMT productions, including tech director (*Thoroughly Modern Millie*, *Big River*, *She Loves Me*), props design (*Peter and the Starcatcher*), and sound design (*A Gentleman's Guide to Love & Murder*, *Mame*, *Peter and the Starcatcher*). By day, Chris is a Software Developer for the Stanford Libraries.



**Patricia Bilello** (*Props Designer*) is a professional mother of three, as well as a wife, a craftswoman, and photographer. She designs props for various community theatres in the Bay Area, serves as a costuming associate at Starting Arts, and is the creative designer at Crafts Out of the Blue Studio. Patricia has designed props for *Beauty and the Beast*; *Elf, the Musical*; *Legally Blonde*; *The Wiz*; *A Gentleman's Guide to Love and Murder*; *Matilda*; *Sweat*; and many more. Her most recent creations for SBMT were used in our eStudio production of *The Revolutionists*.

**Brett Carlson** (*Set Designer*) studied Theater Arts at SJSU and was an intern at the Theatre Royal in Bath, England, where he worked with their youth theatre program. During the COVID shutdown he kept busy by applying his theatrical skills to other projects including the design of a fabulous greenhouse for his parent's yard, and a repaint of Hicklebees's Bookstore's back wall and sign. You may remember his last designs on this stage for *She Loves Me* and *Big River*. He is glad to be back designing for SBMT.



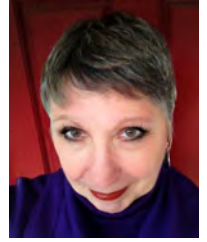
**Richard Cartwright** (*Master Carpenter*) has performed, stage managed, and built sets for many SBMT shows, and cites our 1994 *Anything Goes* as a favorite. He led set construction for such shows as *Thoroughly Modern Millie*; *Mame*; *My Fair Lady*; *Gypsy* (which he also designed); *Kiss Me, Kate*; *Hairspray*; *Les Mis*; *Promises, Promises*; *42nd Street*; *Chicago* (Harriette Hill Award); and our 2007 production of *She Loves Me* (Producer's Award). He has also stage managed and tech directed at SCP. Sincere thanks to all who have helped him build this set, especially Jay Steele and Robert Carey. Special thanks to his wife, Marilyn, for help, support, and understanding—and “letting me play with my friends.”

**Sara K. Dean** (*Executive Director*) is pleased to be starting her fifth season with SBMT. She received her BFA in directing and management from Tisch School of the Arts at New York University. Locally, Sara was the Company Manager at AMTSJ, and worked for San José Rep and CMTSJ. In New York, she was a Production Assistant on Broadway with Disney's *The Lion King*. She is the creator of Glitz Dance Fitness, and was seen onstage in the ensemble of *Will Rogers Follies* with WVLO. Special thanks to the excellent team of amazing artists who brought this story to our stage.



**Doug Hughes** (*Marketing Director*) has been SBMT's “graphics guy” since 2018. In that capacity, he has designed a dozen programs, edited around 200 videos, and created countless logos, collateral items, and social media posts. Doug appeared in SBMT's production of *Big River*, as well as WVLO's *Sister Act*, *Fiddler on the Roof*, and *The Drowsy Chaperone*, BPP's *Little Shop of Horrors*, and SCP's *Once Upon a Mattress*. He and our box office manager, Diane Hughes, have been happily married for 40 years.

**Debra Lambert** (*Music and Vocal Director*) is a singer and pianist, and currently the Director of Musical Performance at SCU. She has sung solo and leading roles with the San Francisco Opera Center, San Francisco Symphony, Oakland/East Bay Symphony, Symphony Silicon Valley, Lake George, Connecticut, West Bay, Pocket, and Des Moines operas, Cabrillo, Bear Valley, and Mendocino Festivals, AMTSJ, Henry Street Playhouse, Hartford Summerstage and others. She received her MM in Opera from the Hartt School and a BFA in Voice from Carnegie-Mellon University. Debra has staged and music directed numerous opera and musical productions, and is grateful to her mother for insisting she begin piano lessons at age 4-1/2. She lives in Menlo Park with her husband and six rescue cats.



**Aya Matsutomo** (*Lighting Designer*) is working with SBMT for the first time. Other Lighting Designer credits include, *Heathers*, *Spelling Bee* (PSP), *Deal with the Dragon* (NCTC), *Seussical*, *Mamma Mia* (NDNU), *Little Women*, *Seussical Jr.*, *Little Princess* (LAYT), *Wedding Singer*, *West Side Story*, *Lord of the Flies* (Tri-School Production). Additionally, she's working as Stage Manager and Master Electrician at theatres across the Bay Area, among them: San José Stage Company, LASC, and Oakland Theatre Project. During the day, Aya works as Theatre Manger / Technical Director at Castilleja School in Palo Alto.



**Carla McCreight** (*Stage Manager*) returns as stage manager after serving in that capacity for SBMT's eStudio production of *Dracula* last year and amazing runs of *Thoroughly Modern Millie*, *The Hunchback of Notre Dame*, and *Mame*. Carla has worked with SBMT on many shows as both a cast and staff member since her performing debut here in *Fiddler on the Roof*. She's a real “theatre kid” who saw her first CMTSJ show at 13, auditioned and got cast in the next one, and has never looked back. In addition to her many performing credits, she assistant stage managed SBMT's *Chess: In Concert* and *Big River* and was on the stage crew for *The Will Rogers Follies* and *...Forum*.





**Christopher Morton** (*Assistant Stage Manager*) is excited to join the SBMT family. Previously, he has stage managed *The Curse* at West Valley College and *The Three Penny Opera* at SJSU, where he earned his BA in Theatre Arts with honors. He has also worked as a production assistant for San José Stage Company's *Adiós Mamá Carlota* and *The Lieutenant of Inishmore*. He is looking forward to stage managing his favorite Sondheim musical, *Company*, this winter.

**Vinh G. Nguyen** (he/him/his) (*Casting Consultant*) is a theatre maker, educator, and advocate who directed our eStudio production of *Anon(ymous)*. He has contributed to many productions throughout the Bay Area as an actor, director, and choreographer. Vinh has taught workshops and/or guest lectured at SDSU, UC Berkeley, Academy of Art University, and SJCC. He is an EDI Consultant at SBMT and serves on the EDI Council for 42nd Street Moon. Vinh holds an MFA in Musical Theatre from SDSU and a BA from SJSU. He is an associate member of the Stage Directors & Choreographers Society and a passionate advocate for arts education and the promotion of equity, diversity, and inclusion.



**Lee Ann Payne** (*Director / Choreographer*) worked with SBMT as the Choreographer for *Thoroughly Modern Millie*; *Promises, Promises*; and *Hairspray*. Other director/choreographer credits include: *Shakespeare in Love*, *The Laramie Project* (TBA Award Winner), *The Producers*, *1940's Radio Hour*, *The Full Monty*, and *Assassins* (TBA Award Finalist). Lee Ann holds an MFA in Musical Theatre from San Diego State University and is a proud member of Actors' Equity.

**Y. Sharon Peng** (*Costume, Hair & Makeup Designer*) freelances in the San Francisco Bay Area and the Los Angeles area. Recent work with SBMT includes *She Loves Me*, *Rachel*, and *Anon(ymous)*, and she serves on the SBMT Board of Directors. A member of IATSE Local 706, Sharon is also Wig & Makeup Supervisor at OSJ. Visit her online portfolio at [ysharonpeng.net](http://ysharonpeng.net).



*Congratulations, Natalie To, recipient of the Legacy Robe!*







**Patti Reed** (*Production Manager*) joined the SBMT family with our 2019 production of *A Gentleman's Guide to Love & Murder*. Previously, she served as Production Manager for SCP for multiple seasons. She also stage managed in New York, Los Angeles, and San Francisco, with favorite theatrical productions including *Chicago* with Juliet Prowse and Bebe Neuwirth, *Company in Concert* with the Original Broadway Cast, and *Joseph and The Amazing Technicolor*

*Dreamcoat* with The Really Useful Theatre Company Ltd, Producer. Patti also spent several years at Walt Disney Feature Animation as an Assistant Production Manager. But her all-time favorite production is her family!

**Lucas Simone** (*Assistant Stage Manager*) is excited to join South Bay Musical Theatre for his first production with them! A sophomore at SCU, he studies Theatre and History and wants to pursue playwriting after graduation.



## Abbreviations used in this program

AMTSJ=American Musical Theatre of San Jose; BACT=Bay Area Children's Theatre; BAM=Bay Area Musicals; BPP=Blue Plaid Players; CCMT=Contra Costa Musical Theatre; CLTC=City Lights Theater Company; CMTSJ=Children's Musical Theatre of San Jose; CS=Cabrillo Stage; CT=Chanticleers Theatre; DMT=Douglas Morrison Theatre; EDI=Equity, Diversity & Inclusion; FMT=Foothill Musical Theatre; HT=Hillbarn Theatre; LASC= Los Altos Stage Company; LAYT=Los Altos Youth Theatre; NCTC=New Conservatory Theatre Center; NDNU=Notre Dame de Namur University; OSJ=Opera San José; PAP=Palo Alto Players; PCRT=Pacific Coast Repertory Theatre; PSP=Pacifica Spindrift Players; SBMT=South Bay Musical Theatre; SCP=Sunnyvale Community Players; SCU=Santa Clara University; SDSU=San Diego State University; SFO=San Francisco Opera; SJCC=San Jose Community College; SJSU=San Jose State University; TBA=Theatre Bay Area; TTC=Tabard Theatre Company; TIM=Theatre in the Mountains; TVRT=Tri-Valley Repertory Theatre; USC=University of Southern California; WVLO=WVLO Musical Theatre Company



## Thank You, Donors!



### Angel (\$2,500+)

Maurice Amado Foundation	Barbara & Andy Heninger	Dick Niblock,	Dan Singletary
Michael S. Grosse & Susan J.	Law-Sun Foundation	Niblock Charitable Trust	In memory of: Edith Steele
Devenport, Grosse-Davenport Trust			Richard and Grace Wang



### Benefactor (\$1,000 - 2,499)

Anita Carey	Henry & Marcia Lawson	David Simon & Lynn Gordon	Steve Stubbs
Sara & Phil Dean	Walter M. Mayes	David Snow & Rosemary	Kathy & Andy Switky
Stephen & Lynda Fox	Gwyneth Price Panos	Elliott-Snow	Jim Tellefson
Bill & Margo Kannenberg	Lea & Karl Schweitzer	Jay Steele	Anonymous Donation



### Champion (\$500 - 999)

Dale Bates	The Hirsch Family	Carl Jukkola & Desmond Lee	Roxanne & Rich Parker
Christina S Bertani	Doug & Diane Hughes	Lion Plumbing Supply	Robert & Bonnie Peterson
Grace E. Colon	Renee Jacobs	James McGrath	Michael Rhone
Richard Enos	Gayle Joslin	Dana Moran	Michael Saenz
			Robert L. Zeiher



### Director (\$250 - 499)

Henry Allhoff	Eyal Oren & Elizabeth Geurts	Joan Miller	Stephen & Teresa Sammonds
Steve Allhoff	Barbara Goetz	Diane Milo	Lois Sharp
Stephane Alwyn	Beverly Hansberry	Tanya Misfeldt	Edye & Larry Stein
Roger & Kathleen Arno	Mae Heagerty-Matos	Richard Pridgite & Rachel	Marcia & Jay Sternin
Doug Brees	Michael Hirsch	Michelberg Charitable Fund	Thomas Swidler & Kari Kindem
Laura Carlsen	Dina & Neil Jacobson	Jennifer Petersen	Braden Taylor
Dallas Carter	Steven & Carol Kay	Donald & Flavia Polensky	Catherine Thermond
Bob & Sue Copeland	Kimberly Kay	The Poncetta Charitable Fund	John Turner
Misty Davies	Joseph Kelly	Tipu Purkayastha & Poorva Malhotra	Donald Village
Derek DeMarco	Janice LeFevre	Chris Reber	Laurie Waldman
Diana Doan	Russell Mangan	Barbara Reynolds	Terri & Bill Weitz
Nique Eagen	Carol & Mike Megaw	Bob & Joyce Rhodes	Michael B. Wisper
Bruce & Catherine Farly	Mary & Robin Melnick	Sarah Rosenberg	Tina & Brian
Cathren Foscatto			



### Enthusiast (\$100 - 249)

Babb Family	Kama & Mark Belloni	Voula & Martin Brown	Rod & Colleen Carlson
Ginnie & Jeff Backes	Genie Bernardini	Becky & Don Brownson	Anne Carpinetti
Julia Wilson Ball	Lauren Bevilacqua	Zhanna Buell	Karen Carter
James Bangsund	Mark Beyer	Peter Buzanski	Shirley Chappell
Anatolie Babaeff	Heinz Bodeker	In memory of Christie H. Buzanski	Joseph Cloward
Victor Beckman	Christina Bolognini	Gary Campanella	

(continued on next page)



**CALIFORNIA  
ARTS COUNCIL**  
A STATE AGENCY

### Thanks to our grant donors

Revenue from ticket sales covers only part of our annual operating budget. Grants and donations help bridge the gap, keeping our doors open and ticket costs affordable.



in partnership with the  
County of Santa Clara



## Enthusiast (\$100 - 249) — continued

Joe Colletti	Robyn Holbrook	Anne & Brian Kearney	Mary Old	Chrisman
Esther Selk & Andrew Conroy	Parker Hough	Edie & Doug Kerr	Ron Packard	Janet Sloan
James Creer	Jackie Hughes	Katie Khera	Marge Papp	Brian Smith & Lisa
In memory of Deborah Cuddy	In honor of: Erin Reis	Ed & Ellie Kiss	Ralph Parkman	Egert-Smith
E Cunningham	In honor of: Jay Steele	Jen Kohler	Robert & Sandy Peeks	Robert & Nancy Smith
Ray D'Ambrosio	In honor of: Robert & Clare Landry	The Kolb Family	Robert W. Peterson	Bernice Smoll
James DeLoach, Jr.	In honor of: our essential workers	Kathy Kriese & Tad Hogg	Rob & Dona Pio	Catherine Snider
Clara Dominguez	In honor of: Steve Allhoff & Jen Maggio	Tom & Teddy Lancaster	Nina Price	Amita Sophonthirathana
Barbara Dyer	In memory of: Bonnie Estolas (mother/educator 39 years)	Kurt & Laura Leafstrand	John & Rosalie Price	Jack & Sally Stallard
Gladys Fong	In memory of: Lupe Diaz	Bev & Phil Lenihan	Richard & Dianne Priest	James Stamos
Shirley Foreman	Maria Jacobson	Dave Leon	Dibyaduti Purkayastha	Chuck Steele
Joseph & Maria Gallo	Jonathan Jacobson & James McKibben	Lisa & James Litchfield	Owen & Vickie Purser	Bob Sunshine
Shirley Gano	Irene & Don Jenkins	Roger & Marge Lobbes	Anastasiya Rakova	Julie & Dan Switky
Greg Goodhue	Michael Johnson	Neal & Sonja Locke	Roberta & John Ray	John H. Turner
Catherine Grellet	Donna Hendryx	In memory of: Jennifer Loftus	Patti & Michael Reed	Christy Wait
Herbert Gross	Patti Henry	Audry Lynch	Reggie Reynolds	H Waterfield
Ruth Ann Groves	Randy Hensley & Allan Hurst	Jeff & Tracy Marr	Mr. & Mrs. James F. Rogers	Richard E & Carol Ann Wells
Benjamin & Brittany Hatch	Marie Hirsch	Terrence McCambridge	Vicki & Bruce Rosenthal	Carolyn D. Whipple
John Heather		Elizabeth McClelland	Joan Rubin	Benton & Mary Lou White
Shelley S. Hebert		Joan Meyer	Shipra & Simon Sampson	Karen Woolard
Donna Hendryx		Joan Miller	Virginia Schmidek	Angela Yeung
Patti Henry		Melissa & Rick Momboisse	Maiko Shaw	Carol Yiu
Randy Hensley & Allan Hurst		Barbara Morgan & Family	Dori Shimer & Phyllis	
Marie Hirsch				

## Friend (up to \$99)

John & Eryl Aynsley	Andrew Calabrese	Lauren D'Ambrosio	Pat Flowers	Vilma Huertas
Stephanie Bailey	Jill Cameron	Barbara Dariano	Joan Fox	Allan Hurst
Bob Baker	Ann & Jim Carberry	Jean & Phil Darnall	Angie Fredrick	Karen Hyde
Laurel Barklow	Gayle Carlile	Glenn & Pat Darragh	Deborah Freeman	T. Steven Ichishta
Marcy Bates	Maryann Carnevale	Diane Davidson	Connie & Frank Geraci	Tami Imai
Andy & Marcy Bates	Laura Carr	David Davison	Lily Garcia	In honor of: Michael's jazz class
The Bates Family	Terri & Jim Casey	Gregory Dawson	Nicole Garcia	In honor of: Tap Classes!
Rita Baum	Jacqueline Cathcart	Amy Day	Christine Gardner	In honor of: Almost Maine
Kim Beals	Shane Caya	Janet Quinn Dennis	Sarah Goer	In honor of: Sasha Motalygo
Walter Beam & Carolyn Barber	Tiffany Cesarin	Karen DeHart	Shawna Gonzales	In honor of: Barbara Heninger
Thomas Becker	Marcia & Jan Chaiiken	Jerome DeRuntz	Yulia Gorman	In honor of: Almost Maine Cast & Crew
Jill Bicknell	Elizabeth Chandler	Bernard Director	Susan Grimes	In honor of: Sruthi Jayakumar
Joyce Birth	Cheri Chapman	Jodi Disario	Bernard & Carol Gutow	In honor of: all the people that dedicate their energy & talent to enable others to participate in high-quality community theatre!
Richard Blish & Marian Devine	Corey Chapman	Lauren Doyle	Rosalie Hallinan	In memory of: Lupe Diaz & Dianne Lane
Richard Bothman	Wendy Chen-Shen	Libby Dutrow	Katherine Hansen	In memory of: Ron Biehler
Jason Bram	Kathryn Class	Mary Egan	Judy Harper	
Randi Brenowitz	Gerald Clodius	David Eisbach	Karen Harrell	
Robert Brock	Walt Cole	Elaine Elkin	Marcia Harris	
Barbara Brothers	Carol & James Commendatore	Jerry & Jackie Engbretson	Hatch Family	
Nelson Brown	Elyse Cook	Barbara Fairlie	Cheryl Haylock	
Cheyenne Brown	Elizabeth Cooper	Frank Farris	Susan Hayward	
Raegen Brunker	Jennifer Cousins	Karen Fear	Daniel & Wendy Hendry	
Beverly Bryant	Libby Cox	Chris Fernandez	Gerald Hoffman	
Connor Bui	Stephen P. Cramer	Karen Fihn	Christian & Jesslyn Holombo	
Leticia Burton	Sybil Cramer	Doreen Finkelstein	Tiffany Howard	
	Bonnie Cullen	Elizabeth Finkler	Sharon Hoyt	



## Friend (up to \$99) – continued

In memory of: Dianne Lane	Allan Low	Lee & Rose Myers	Erin Reis	Linda Solis
Katherine Ingold	Joshua Lubs	Pat Nakashima & Ken Yamamoto	Robert M. Renfer	Mary Stamps
Raefael Irvine	Sarah Macaluso	Kim L. Nameny	John Ribble	Carole Stanfield
Cynthia Jackson	Charlotte Mackay	Karen Nelson	Ingrid Rittenberg	Gloria Stanley
Claire Jaster	Grace Maes	Don Nguyen	Cathy Rode	The Jay Steele Fan Club
Marisa Johnson	Pap Charlie Marichek	Vinh G. Nguyen	Iren Roldan	Al Stewart
Phil Johnson	Sharon Martin	Ralph Occhipinti	Cary Ann Rosko	Mike & Lucille Story
Troy Johnson	Andra Marynowski	James Oh	Norma Ruiz	Brianna Stutzman
Tiffany Jouselin	Mark Mason	Molly Olivas	Leila Saeed	Linda M Taylor
Wilkes Joy	Loretta Matheson	Jenny Orteiz	Randy Sahae	Stacie Thiel
Cathleen Kalcic	Wendy Max	Kenneth J Oshan	Dianne Saichek	Jeanne Thomas
Robert & Mary Kelly	Pat Potter McAndrews	Glenn & Elizabeth Overstreet	Adele Salle & Marvin Kohn	Eric Tooley
Justin Kerekes	The McClelland Family	Linda Poncetta	Rachel Santos	Alessandro Toso
Sita Kern	Carla McCreight	Peggy Panighetti	Jason Saylor	Janet Truman
Hans Kiel	Doug McGrath	Sally Paolini	Helen Scheel	Kent Vincent
Elizabeth Klueck-Olivas	Ellen McKee	Amy Papazian	Deanna Scheler	Richard Voss
Marvin Kohn	Heidi McLean	Mary Ann Parks	Margaret & Kenneth Schieck	Rich Walker
Kayvon-Kendra Kordestani	Antoinette McMillin	Kelly Pasquale	Libby & Joel Schroeder	Shannon Wass
Lisa Kunze	Linda Medeiros	Kay Paumier	Lorraine Scott	Sue Weber
Michael Kurty	Joyce Mendel	James Pearson	Ed & Kerli Sengstack	Susan Weiner
Amelia Kusar	Julie Mehta	Melanie Phung	Christie & Roy Shackel	Barbara Weissman
Jennifer Kutch	Deborah Miller	Marilyn Pifer	Ronald Shipper	Anne Welker
Emerald Lai	Greg Mischo	Lydia Polidi	Luda Shuster	Scott Winters
Robert & Clare Landry	David Mister	Jenn Poret	Nancy Siverson	Aimee & James Wu
Elizabeth Lawrence	Nick Moline	Charmaine Powell	Dorothy V. Smith	Kenneth Yamamoto
John & Mary Lemons	The Motalygos	Sandra Ray	Roger L. Smith	Faye Yang
Sally LeSchofs	Robin Mulgannon	Esther & Joseph Rechenmacher	Richard Sneiderman	Sharon Yee
Doris Livezey	Carol Doup Muller	Liberte Reilly	Annette Snyder	George Yefchak
Helen Lott	Ronald Muneakawa		Betty Soares	Diane Young
Charles Louis III				

Over 60 individuals (indicated in **boldface type**) contribute monthly to SBMT to ensure the longevity of the arts in Saratoga. (List is effective as of Aug. 28, 2021.)

Others acknowledged in the preceding three pages donated between June, 2020 and August, 2021. Thanks to everyone! Please consider joining the donor family by making a monthly contribution via the website link below.

## We LOVE all our donors!

We are extremely grateful to all of our very generous donors whose contributions help make our theatre successful. To make a tax-deductible contribution, please visit our website at...

**SouthBayMT.com/donate.**





Do you love theatre?

# WE WANT YOU!

South Bay Musical Theatre is a people-powered non-profit known for Noteworthy Entertainment created by a talented team and supported by our highly valued volunteer community.

We rely on arts lovers like YOU for everything from A to Z. Join us as a member of our...

Noteworthy  
Entertainment



**A**ctors' Network

**B**ox Office Team

**C**onstruction Crew

**D**onor Circle

**E**vent Planners

**F**undraising Friends

**G**rant Writers

**H**ospitality Helpers

•  
•  
•

and so **M**uch More!



Get more info by going to  
[SouthBayMT.com/volunteer](http://SouthBayMT.com/volunteer)  
or point your cellphone  
camera at this QR code.